

DF UNIT (C550)

PARTS CATALOG

INTRODUCTION

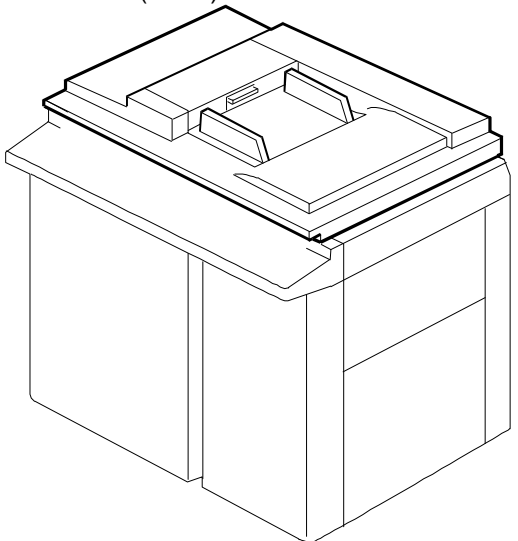
This chapter instructs you the numbers and names of parts on this machine.

INDEX to PARTS CATALOG

Location of Unit	3
1.DF Unit 1 (C550)	4
2.DF Unit 2 (C550)	6
3.DF Unit 3 (C550)	8
4.DF Unit 4 (C550)	10
5.Decal And Document (C550).....	12
Parts index	15

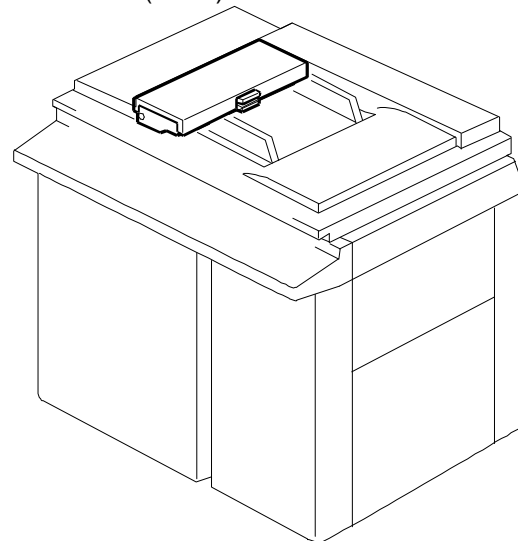
Location of unit

1. DF UNIT 1 (C550)



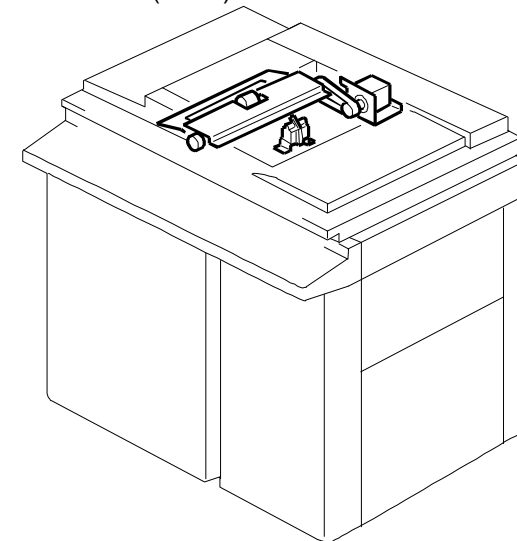
See Page 4

2. DF UNIT 2 (C550)



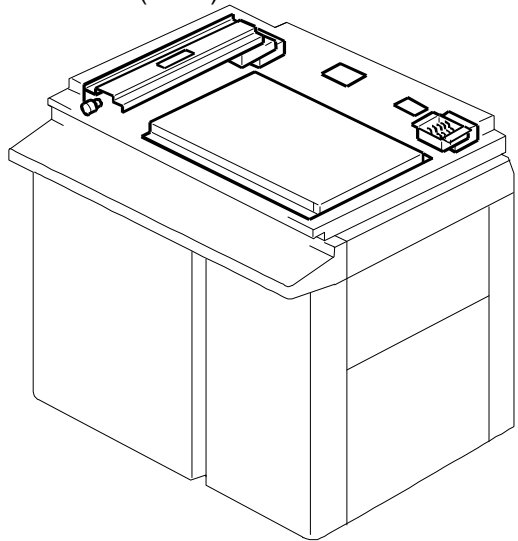
See Page 6

3. DF UNIT 3 (C550)

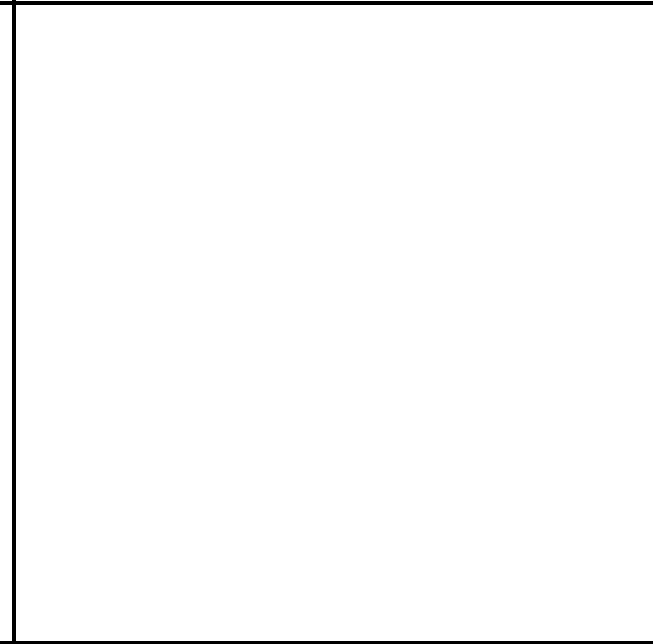
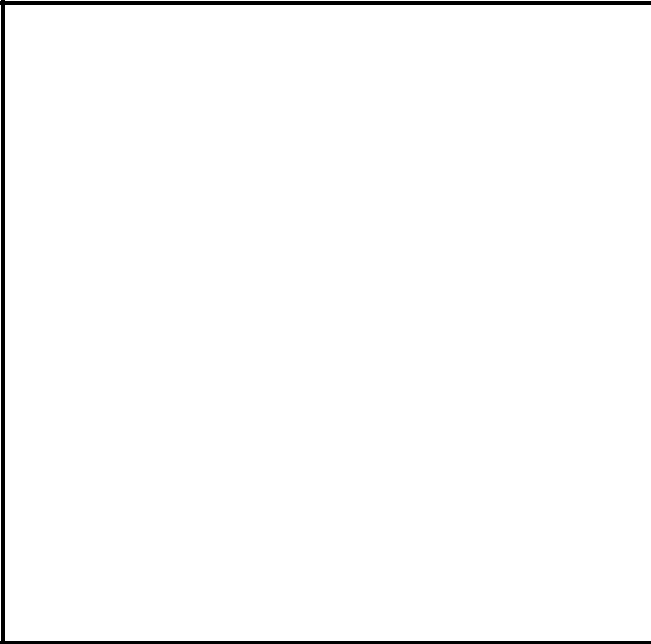


See Page 8

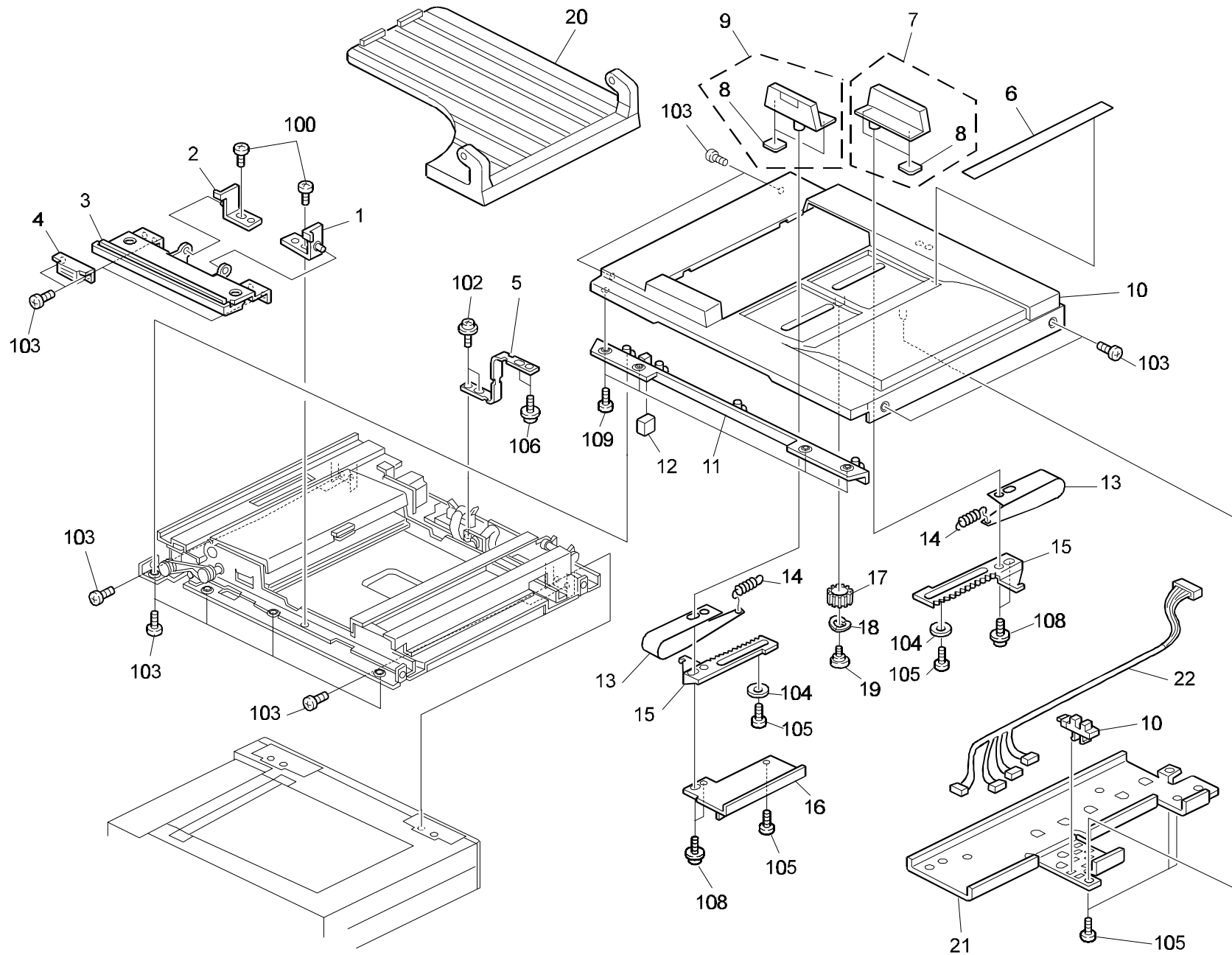
4. DF UNIT 4 (C550)



See Page 10



1. DF UNIT 1 (C550)

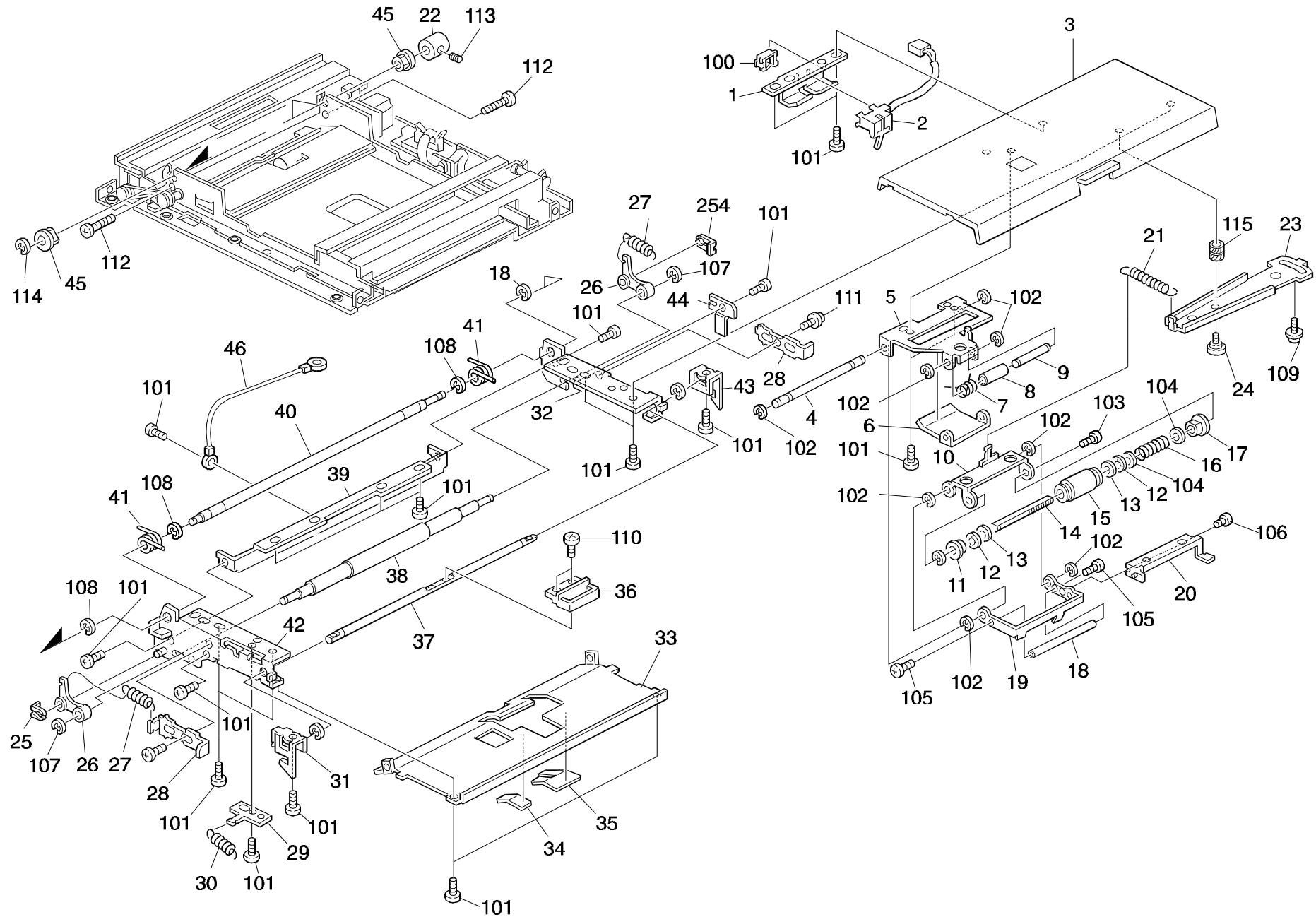


1.DF UNIT 1 (C550)

Index No.	Part No.	Description	Q'ty Per Assembly
1	C218 3447	Right Bracket	1
2	C218 3442	Left Bracket	1
3	C218 3420	ADF Release Lever Bracket	1
4	5054 0536	Magnet Catch Ass'y	1
5	C218 3490	Cover Stopper Band	1
6	C218 2504	Decal Original Size	1
7	C218 2565	Rear Side Fence	1
8	C209 3095	Right Mylar	1
9	C218 2564	Front Side Fence	1
10	C550 2602	ADF Cover	1
11	C218 2650	Front Lower Cover	1
12	C218 8423	Magnet Catch	1
13	C209 3093	Slider Seal	1
14	5070 0671	Spring - Stopper	1
15	C218 2568	Side Fence Gear	1
16	C218 3450	Original Sensor Actuator	1
17	C201 3011	Gear - 16T	1
18	5443 2713	Wave Washer	1
19	5403 2075	Stepped Screw	1
20	C218 2670	Original Tray	1
21	C218 3455	Original Sensor Bracket	1
22	C218 8149	Sensor Harness - Original Size	1
23	AW02 0021	Photointerruptor - 175487-3	1

Index No.	Part No.	Description	Q'ty Per Assembly
100	0313 0040Z	Philips Pan Head Screw - M3x4	
101	0353 0060D	Sunk Screw - 3x6	
102	0960 4006Z	Philips Flange Screw - M4x6	
103	0344 0060D	Philips Truss Head Screw - M4x6	
104	0807 2034	Washer - M3.5	
105	0313 0050Z	Philips Screw - 3x5	
106	0960 4006Z	Philips Flange Screw - M4x6	
108	0965 4008B	Tapping Screw - M4 X 8	
109	0413 0082F	Bind Tapping Screw - M3x8	

2. DF UNIT 2 (C550)

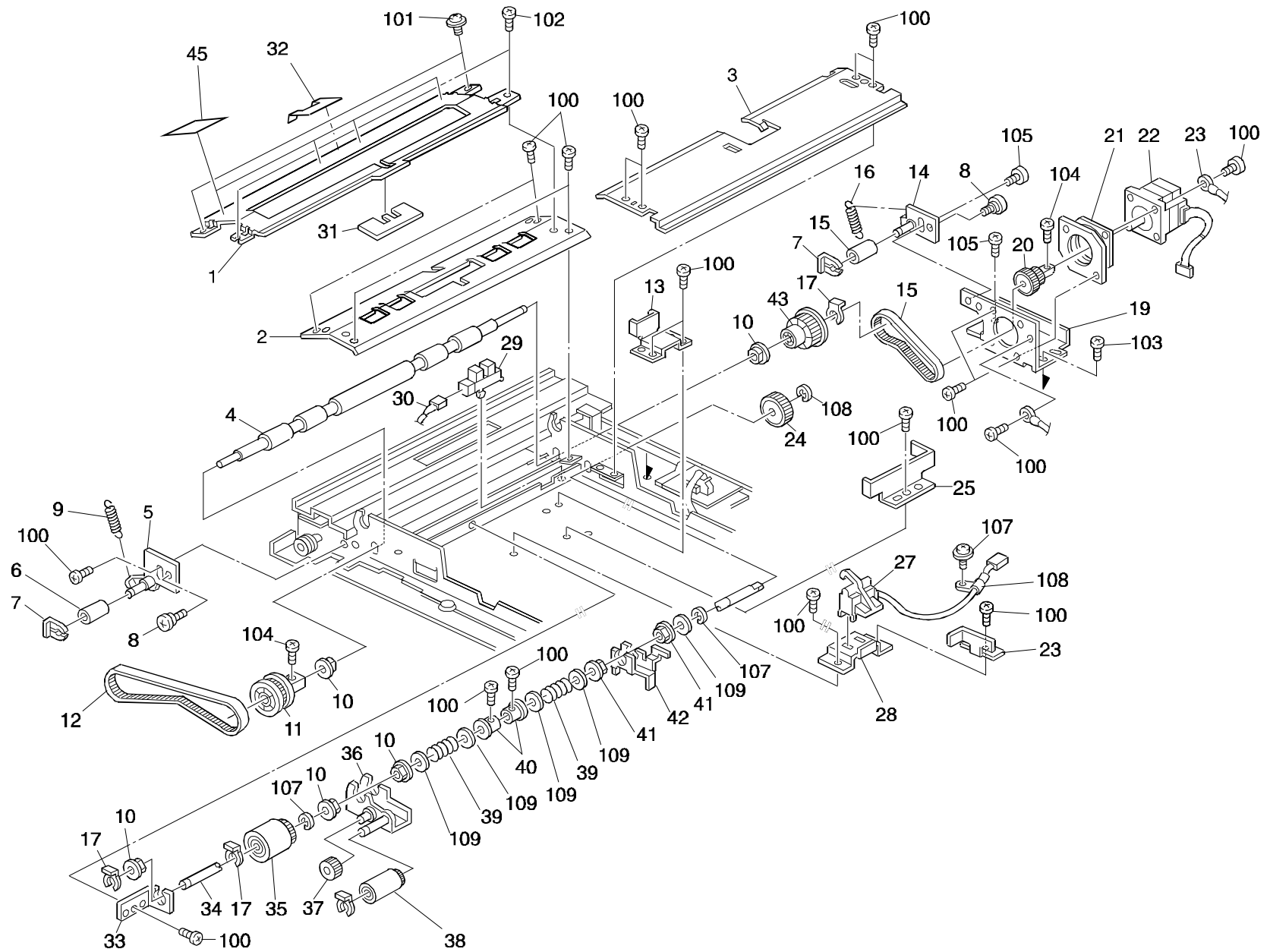


2.DF UNIT 2 (C550)

Index No.	Part No.	Description	Q'ty Per Assembly
1	C218 3365	Registration Sensor Bracket	1
2	C218 8409	Registration Sensor	1
3	C218 3331	Base Cover	1
4	C218 3349	Pick-up Roller Shaft	1
5	C218 3350	Pick-up Roller Holder	1
6	C218 3352	Original Pressure	1
7	C218 3354	Spring	1
8	0707 4200B	Bushing - 4x20	1
9	C218 3353	Pressure Shaft	1
10	C218 3346	Pick-up Roller Holder	1
11	C218 3381	Spacer - 6x15x5.5	1
12	C218 3379	Clutch Disk	1
13	C218 3380	Clutch	1
14	C218 3383	Pick-up Roller Shaft	1
15	C218 3386	Separation Roller	1
16	C218 3385	Spring	1
17	C218 3382	Bushing - 6x15x9	1
18	C218 3355	Original Gate Stay	1
19	C218 3347	Original Stopper Gate	1
20	C218 3348	Support Plate - Stoper Gate	1
21	C218 3358	Adjust Spring	1
22	C218 3334	Stopper Collar	1
23	C218 3357	Adjust Lever	1
24	C218 3314	Adjusting Pin	1
25	5206 2686	Snap Ring	1
26	C218 3360	Pressure Roller Arm	1
27	C218 3362	Pressure Spring	1
28	C218 3361	Adjusting Plate	1
29	C218 3343	Release Lever Bracket	1
30	C218 3342	Spring	1
31	C218 3341	Left Stopper	1
32	C218 3370	Front Side Plate	1
33	C218 3368	Original Feed Unit Guide	1
34	C218 3369	Guide Mylar - 13x22	1
35	C218 3374	Guide Mylar - 22x30	1

Index No.	Part No.	Description	Q'ty Per Assembly
36	C218 3338	Release Lever	1
37	C218 3339	Release Shaft	1
38	C218 3359	Pressure Roller	1
39	C218 3366	Feed Unit Stay	1
40	C218 3335	Feed Unit Shaft	1
41	C218 3336	Release Spring	1
42	C218 3372	Rear Side Plate	1
43	C218 3377	Sensor Actuator	1
44	C218 3340	Right Stopper	1
45	5053 0447	Bushing - 6mm	1
46	C218 8426	Grounding Harness	1
100	1105 0243	Wire Saddle	
101	0951 3006Z	Philips Screw With Flat Washer - M3	
102	0720 0030Z	Retaining Ring - M3	
103	0353 0060Z	Screw - M3X6	
104	0701 0060Z	Flat Washer - M6	
105	0312 5050Z	Philips Pan Head Screw - M2.5x5	
106	0313 0060Z	Philips Pan Head Screw - M3x6	
107	0720 0040Z	Retaining Ring - M4	
108	0720 0060Z	Retaining Ring - M6	
109	0951 3006Z	Philips Screw With Flat Washer - M3	
110	0313 0060Z	Philips Pan Head Screw - M3x6	
111	0313 0060Z	Philips Pan Head Screw - M3x6	
112	0314 0100Z	Philips Screw - 4x10	
113	0573 0040E	Hexagon Headless Set Screw - M3x4	
114	0720 0040Z	Retaining Ring - M4	
115	0707 4200B	Bushing - 4x20	

3. DF UNIT 3 (C550)

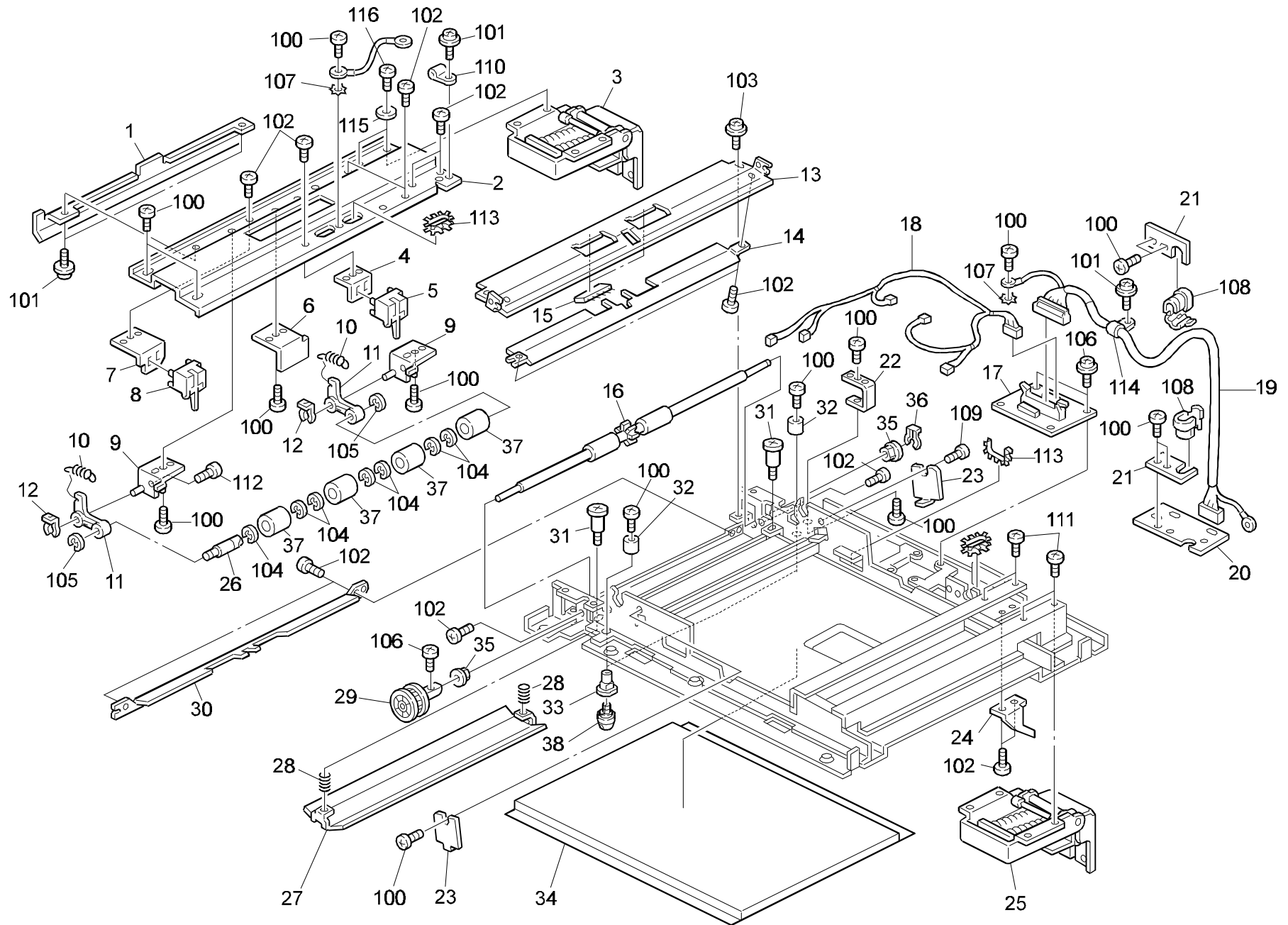


3.DF UNIT 3 (C550)

Index No.	Part No.	Description	Q'ty Per Assembly
1	C218 3304	Upper Registration Guide	1
2	C218 3306	Lower Registration Guide	1
3	C218 3301	Separation Guide	1
4	C218 3269	Original Feed Roller	1
5	C218 3286	Tension Bracket	1
6	C218 3290	Collar - 4x8x14	1
7	5206 2686	Snap Ring	1
8	C218 3285	Tension Stopper	1
9	C218 3296	Tension Spring	1
10	5053 0447	Bushing - 6mm	1
11	C218 3298	Timing Pulley - 29Z	1
12	C218 3299	Timing Belt - B40S2M280	1
13	C218 3242	Harness Cover	1
14	C218 3276	Tension Bracket	1
15	C218 3290	Collar - 4x8x14	1
16	C218 3279	Tension Spring	1
17	5447 2681	Snap Ring	1
18	C218 3293	Timing Belt - B60S2M208	1
19	C218 3289	Drive Motor Bracket	1
20	C218 3292	Drive Motor Gear - 16Z	1
21	C218 3086	Motor Cushion	1
22	C218 8215	ADF Drive Motor	1
23	C218 8425	Grounding Harness	1
24	C218 3282	Gear - 42Z	1
25	C218 3244	Harness Cover	1
26	C218 3243	Harness Cover	1
27	C218 8406	Original Sensor	1
28	C218 3272	Original Sensor Bracket	1
29	AW02 0021	Photointerruptor - 175487-3	1
30	C218 8133	ADF Harness	1
31	C218 3305	Support Guide Plate	1
32	C218 3310	Guide Mylar	1
33	C218 3263	Feed Roller Bracket	1
34	C218 3281	Pick-up Roller Shaft	1
35	C218 3389	Gear - 20Z	1

Index No.	Part No.	Description	Q'ty Per Assembly
36	C218 3390	Pick-up Roller Brakcet	1
37	C218 3388	Pick-up Roller	1
38	C218 3387	Feed Roller	1
39	C218 3265	Pick-up Spring	1
40	C218 3264	Spring Stopper	1
41	C218 3384	Bushing - 6mm	1
42	C218 3266	Original Feed Gate	1
43	C218 3294	Pulley - 45Z	1
44	C218 3305	Support Guide Plate	1
45	C218 3344	ADF Cover Guide Sheet	1
100	0314 0060Z	Philips Pan Head Screw - M4x6	
101	0960 3006Z	Philips Flange Screw-M3x6	
102	0313 0060Z	Philips Pan Head Screw - M3x6	
103	0801 1004	Screw - M4X4	
104	0951 3006Z	Philips Screw With Flat Washer - M3	
105	0314 0080Z	Philips Screw - 4x8	
106	0960 4006Z	Philips Flange Screw - M4x6	
107	0720 0050Z	Retaining Ring - M5	
108	1105 0005	Nylon Clip - 3N	
109	0701 0060Z	Flat Washer - M6	

4. DF UNIT 4 (C550)



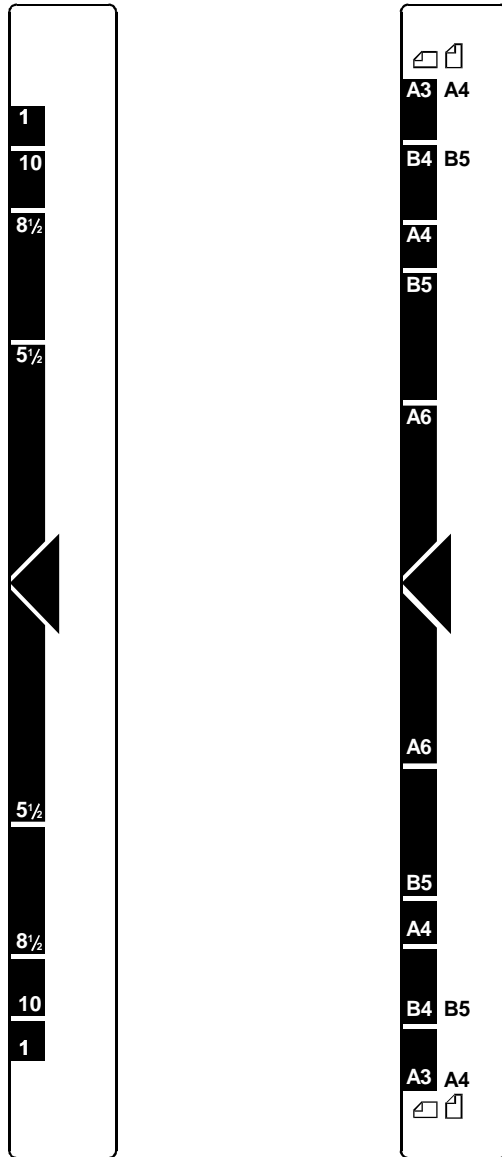
4.DF UNIT 4 (C550)

Index No.	Part No.	Description	Q'ty Per Assembly
1	C218 3396	Left Stay Bracket	1
2	C218 3395	Left Stay	1
3	C218 3424	Left Hinge Ass'y	1
4	C218 3317	Registration Sensor Bracket	1
5	C218 8403	Original Release Sensor	1
6	C218 3241	Exit Roller Cover	1
7	C218 3318	Bracket - Sensor - Exit	1
8	C218 8402	Exit Sensor	1
9	C218 3311	Left Stay Bracket	1
10	C218 3323	Exit Roller Spring	1
11	C218 3360	Pressure Roller Arm	1
12	5206 2686	Snap Ring	1
13	C218 3309	Lower Exit Guide	1
14	C218 3308	Upper Exit Guide	1
15	C218 3398	Antistatic Brush	1
16	C218 3270	Original Exit Roller	1
17	C218 8082	ADF Main Board	1
18	C218 8133	ADF Harness	1
19	C218 8417	Relay Harness	1
20	C218 3473	Interface Board Bracket	1
21	C218 3475	ADF Harness Holder	1
22	C218 3399	Supporting Plate - Stay - Hinge	1
23	C218 3325	Cover Plate	1
24	C218 3433	ADF Sensor Actuator	1
25	C218 3423	Right Hinge Ass'y	1
26	C218 3321	Exit Roller Shaft	1
27	C218 3324	Original Contact Guide	1
28	C218 3328	Pressure Spring	1
29	C218 3298	Timing Pulley - 29Z	1
30	C218 3326	Original Tray Holder	1
31	C218 3327	Stepped Screw - M3x16	1
32	C218 3435	Collar - 5x11x10.7	1
33	C218 3436	Stud - M4	1
34	C550 3491	ADF Cover Sheet	1
35	5053 0447	Bushing - 6mm	1

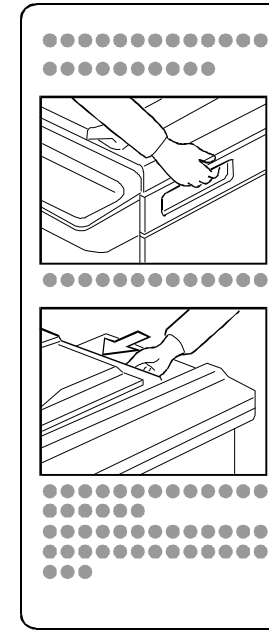
Index No.	Part No.	Description	Q'ty Per Assembly
36	5447 2681	Snap Ring	1
37	C218 3320	Exit Roller	1
38	C218 3437	Stud - M4	1
100	0314 0060Z	Philips Pan Head Screw - M4x6	
101	0960 4006Z	Philips Flange Screw - M4x6	
102	0313 0060Z	Philips Pan Head Screw - M3x6	
103	0960 3006Z	Philips Flange Screw-M3x6	
104	0720 0060Z	Retaining Ring - M6	
105	0720 0040Z	Retaining Ring - M4	
106	0951 3006Z	Philips Screw With Flat Washer - M3	
107	0705 0040B	Toothed Washer	
108	1106 0101	Cord Stopper (110,115V)	
109	0801 1004	Screw - M4X4	
110	1105 0005	Nylon Clip - 3N	
111	0960 4008W	Philips Flange Screw - M4x8	
112	0313 0050Z	Philips Screw - 3x5	
113	1105 0243	Wire Saddle	
114	1105 0009	Nylon Clip - 5N	
115	0701 0060Z	Flat Washer - M6	
116	0960 4008Z	Flange Head Screw - 4 X 8	
117	0951 4006Z	Philips Screw With Flat Washer - M4	

5. DECAL AND DOCUMENT (C550)

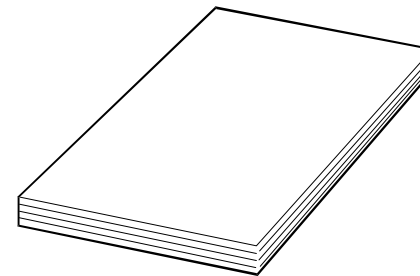
1



2



3



5.DECAL AND DOCUMENT (C550)

Index No.	Part No.	Description	Q'ty Per Assembly
1	C218 2504	Decal Original Size	1
1	C550 2641	Decal - Original Size - LT	1
2	C550 2645	Multi Decal - Simbol	1
3	C550 8610	Installation Procedure - English	1

Index No.	Part No.	Description	Q'ty Per Assembly

PARTS INDEX

Part No.	Description	Page and Index No.
AW02 0021	Photointerruptor - 175487-3	5- 23
AW02 0021	Photointerruptor - 175487-3	9- 29
C201 3011	Gear - 16T	5- 17
C209 3093	Slider Seal	5- 13
C209 3095	Right Mylar	5- 8
C218 2504	Decal Original Size	5- 6
C218 2504	Decal Original Size	13- 1
C218 2564	Front Side Fence	5- 9
C218 2565	Rear Side Fence	5- 7
C218 2568	Side Fence Gear	5- 15
C218 2650	Front Lower Cover	5- 11
C218 2670	Original Tray	5- 20
C218 3086	Motor Cushion	9- 21
C218 3241	Exit Roller Cover	11- 6
C218 3242	Harness Cover	9- 13
C218 3243	Harness Cover	9- 26
C218 3244	Harness Cover	9- 25
C218 3263	Feed Roller Bracket	9- 33
C218 3264	Spring Stopper	9- 40
C218 3265	Pick-up Spring	9- 39
C218 3266	Original Feed Gate	9- 42
C218 3269	Original Feed Roller	9- 4
C218 3270	Original Exit Roller	11- 16
C218 3272	Original Sensor Bracket	9- 28
C218 3276	Tension Bracket	9- 14
C218 3279	Tension Spring	9- 16
C218 3281	Pick-up Roller Shaft	9- 34
C218 3282	Gear - 42Z	9- 24
C218 3285	Tension Stopper	9- 8
C218 3286	Tension Bracket	9- 5
C218 3289	Drive Motor Bracket	9- 19
C218 3290	Collar - 4x8x14	9- 6
C218 3290	Collar - 4x8x14	9- 15
C218 3292	Drive Motor Gear - 16Z	9- 20
C218 3293	Timing Belt - B60S2M208	9- 18

Part No.	Description	Page and Index No.
C218 3294	Pulley - 45Z	9- 43
C218 3296	Tension Spring	9- 9
C218 3298	Timing Pulley - 29Z	9- 11
C218 3298	Timing Pulley - 29Z	11- 29
C218 3299	Timing Belt - B40S2M280	9- 12
C218 3301	Separation Guide	9- 3
C218 3304	Upper Registration Guide	9- 1
C218 3305	Support Guide Plate	9- 31
C218 3305	Support Guide Plate	9- 44
C218 3306	Lower Registration Guide	9- 2
C218 3308	Upper Exit Guide	11- 14
C218 3309	Lower Exit Guide	11- 13
C218 3310	Guide Mylar	9- 32
C218 3311	Left Stay Bracket	11- 9
C218 3314	Adjusting Pin	7- 24
C218 3317	Registration Sensor Bracket	11- 4
C218 3318	Bracket - Sensor - Exit	11- 7
C218 3320	Exit Roller	11- 37
C218 3321	Exit Roller Shaft	11- 26
C218 3323	Exit Roller Spring	11- 10
C218 3324	Original Contact Guide	11- 27
C218 3325	Cover Plate	11- 23
C218 3326	Original Tray Holder	11- 30
C218 3327	Stepped Screw - M3x16	11- 31
C218 3328	Pressure Spring	11- 28
C218 3331	Base Cover	7- 3
C218 3334	Stopper Collar	7- 22
C218 3335	Feed Unit Shaft	7- 40
C218 3336	Release Spring	7- 41
C218 3338	Release Lever	7- 36
C218 3339	Release Shaft	7- 37
C218 3340	Right Stopper	7- 44
C218 3341	Left Stopper	7- 31
C218 3342	Spring	7- 30
C218 3343	Release Lever Bracket	7- 29

Part No.	Description	Page and Index No.
C218 3344	ADF Cover Guide Sheet	9- 45
C218 3346	Pick-up Roller Holder	7- 10
C218 3347	Original Stopper Gate	7- 19
C218 3348	Support Plate - Stoper Gate	7- 20
C218 3349	Pick-up Roller Shaft	7- 4
C218 3350	Pick-up Roller Holder	7- 5
C218 3352	Original Pressure	7- 6
C218 3353	Pressure Shaft	7- 9
C218 3354	Spring	7- 7
C218 3355	Original Gate Stay	7- 18
C218 3357	Adjust Lever	7- 23
C218 3358	Adjust Spring	7- 21
C218 3359	Pressure Roller	7- 38
C218 3360	Pressure Roller Arm	7- 26
C218 3360	Pressure Roller Arm	11- 11
C218 3361	Adjusting Plate	7- 28
C218 3362	Pressure Spring	7- 27
C218 3365	Registration Sensor Bracket	7- 1
C218 3366	Feed Unit Stay	7- 39
C218 3368	Original Feed Unit Guide	7- 33
C218 3369	Guide Mylar - 13x22	7- 34
C218 3370	Front Side Plate	7- 32
C218 3372	Rear Side Plate	7- 42
C218 3374	Guide Mylar - 22x30	7- 35
C218 3377	Sensor Actuator	7- 43
C218 3379	Clutch Disk	7- 12
C218 3380	Clutch	7- 13
C218 3381	Spacer - 6x15x5.5	7- 11
C218 3382	Bushing - 6x15x9	7- 17
C218 3383	Pick-up Roller Shaft	7- 14
C218 3384	Bushing - 6mm	9- 41
C218 3385	Spring	7- 16
C218 3386	Separation Roller	7- 15
C218 3387	Feed Roller	9- 38
C218 3388	Pick-up Roller	9- 37

Part No.	Description	Page and Index No.
C218 3389	Gear - 20Z	9- 35
C218 3390	Pick-up Roller Brakcet	9- 36
C218 3395	Left Stay	11- 2
C218 3396	Left Stay Bracket	11- 1
C218 3398	Antistatic Brush	11- 15
C218 3399	Supporting Plate - Stay - Hinge	11- 22
C218 3420	ADF Release Lever Bracket	5- 3
C218 3423	Right Hinge Ass'y	11- 25
C218 3424	Left Hinge Ass'y	11- 3
C218 3433	ADF Sensor Actuator	11- 24
C218 3435	Collar - 5x11x10.7	11- 32
C218 3436	Stud - M4	11- 33
C218 3437	Stud - M4	11- 38
C218 3442	Left Bracket	5- 2
C218 3447	Right Bracket	5- 1
C218 3450	Original Sensor Actuator	5- 16
C218 3455	Original Sensor Bracket	5- 21
C218 3473	Interface Board Bracket	11- 20
C218 3475	ADF Harness Holder	11- 21
C218 3490	Cover Stopper Band	5- 5
C218 8082	ADF Main Board	11- 17
C218 8133	ADF Harness	9- 30
C218 8133	ADF Harness	11- 18
C218 8149	Sensor Harness - Original Size	5- 22
C218 8215	ADF Drive Motor	9- 22
C218 8402	Exit Sensor	11- 8
C218 8403	Original Release Sensor	11- 5
C218 8406	Original Sensor	9- 27
C218 8409	Registration Sensor	7- 2
C218 8417	Relay Harness	11- 19
C218 8423	Magnet Catch	5- 12
C218 8425	Grounding Harness	9- 23
C218 8426	Grounding Harness	7- 46
C550 2602	ADF Cover	5- 10
C550 2641	Decal - Original Size - LT	13- 1

Part No.	Description	Page and Index No.
C550 2645	Multi Decal - Simbol	13- 2
C550 3491	ADF Cover Sheet	11- 34
C550 8610	Installation Procedure - English	13- 3

Part No.	Description	Page and Index No
5053 0447	Bushing - 6mm	7- 45
5053 0447	Bushing - 6mm	9- 10
5053 0447	Bushing - 6mm	11- 35
5054 0536	Magnet Catch Ass'y	5- 4
5070 0671	Spring - Stopper	5- 14
5206 2686	Snap Ring	7- 25
5206 2686	Snap Ring	9- 7
5206 2686	Snap Ring	11- 12
5403 2075	Stepped Screw	5- 19
5443 2713	Wave Washer	5- 18
5447 2681	Snap Ring	9- 17
5447 2681	Snap Ring	11- 36

Part No.	Description	Page and Index No.
0312 5050Z	Philips Pan Head Screw - M2.5x5	7-105
0313 0040Z	Philips Pan Head Screw - M3x4	5-100
0313 0050Z	Philips Screw - 3x5	5-105
0313 0050Z	Philips Screw - 3x5	11-112
0313 0060Z	Philips Pan Head Screw - M3x6	7-106
0313 0060Z	Philips Pan Head Screw - M3x6	7-110
0313 0060Z	Philips Pan Head Screw - M3x6	7-111
0313 0060Z	Philips Pan Head Screw - M3x6	9-102
0313 0060Z	Philips Pan Head Screw - M3x6	11-102
0314 0060Z	Philips Pan Head Screw - M4x6	9-100
0314 0060Z	Philips Pan Head Screw - M4x6	11-100
0314 0080Z	Philips Screw - 4x8	9-105
0314 0100Z	Philips Screw - 4x10	7-112
0344 0060D	Philips Truss Head Screw - M4x6	5-103
0353 0060D	Sunk Screw - 3x6	5-101
0353 0060Z	Screw - M3X6	7-103
0413 0082F	Bind Tapping Screw - M3x8	5-109
0573 0040E	Hexagon Headless Set Screw - M3x4	7-113
0701 0060Z	Flat Washer - M6	7-104
0701 0060Z	Flat Washer - M6	9-109
0701 0060Z	Flat Washer - M6	11-115
0705 0040B	Toothed Washer	11-107
0707 4200B	Bushing - 4x20	7- 8
0707 4200B	Bushing - 4x20	7-115
0720 0030Z	Retaining Ring - M3	7-102
0720 0040Z	Retaining Ring - M4	7-107
0720 0040Z	Retaining Ring - M4	7-114
0720 0040Z	Retaining Ring - M4	11-105
0720 0050Z	Retaining Ring - M5	9-107
0720 0060Z	Retaining Ring - M6	7-108
0720 0060Z	Retaining Ring - M6	11-104
0801 1004	Screw - M4X4	9-103
0801 1004	Screw - M4X4	11-109
0807 2034	Washer - M3.5	5-104
0951 3006Z	Philips Screw With Flat Washer - M3	7-101

Part No.	Description	Page and Index No
0951 3006Z	Philips Screw With Flat Washer - M3	7-109
0951 3006Z	Philips Screw With Flat Washer - M3	9-104
0951 3006Z	Philips Screw With Flat Washer - M3	11-106
0951 4006Z	Philips Screw With Flat Washer - M4	11-117
0960 3006Z	Philips Flange Screw-M3x6	9-101
0960 3006Z	Philips Flange Screw-M3x6	11-103
0960 4006Z	Philips Flange Screw - M4x6	5-102
0960 4006Z	Philips Flange Screw - M4x6	5-106
0960 4006Z	Philips Flange Screw - M4x6	9-106
0960 4006Z	Philips Flange Screw - M4x6	11-101
0960 4008W	Philips Flange Screw - M4x8	11-111
0960 4008Z	Flange Head Screw - 4 X 8	11-116
0965 4008B	Tapping Screw - M4 X 8	5-108
1105 0005	Nylon Clip - 3N	9-108
1105 0005	Nylon Clip - 3N	11-110
1105 0009	Nylon Clip - 5N	11-114
1105 0243	Wire Saddle	7-100
1105 0243	Wire Saddle	11-113
1106 0101	Cord Stopper (110,115V)	11-108